



CONTEXT

The deteriorating humanitarian situation in recent years has led to increased humanitarian needs across Ethiopia, with over 20 million people – internally displaced persons (IDPs), returning IDPs, crisis-affected communities, returning migrants, and their home communities among them – needing humanitarian assistance and protection in 2023. Nearly 3 million IDPs have been identified in Ethiopia in 2022, with displacement risks remaining high in 2023 and beyond. Conflict in the northern parts of the country, violence in many other parts, and natural hazards such as one of the worst droughts in recent decades, frequent floods, and landslides are the main drivers of displacement and needs.

Communities in southern and eastern parts of Ethiopia are suffering from a devastating drought following five consecutive failed rainy seasons. There is a high probability of a sixth failed season in 2023, a phenomenon not seen or heard of in recorded history. A staggering level of livestock deaths is significantly affecting livelihoods, with over 6.85

million livestock dying since late 2021. Nearly 5 million households are at risk of losing their livestock in drought affected Oromia, Somali, and SNNP regions. The prolonged drought has triggered significant displacement that is likely to increase over the next months across communities with eroded livelihoods. They will be uprooted in search of food, pasture, and water.

High displacement and damage to infrastructure and basic services have exposed the population to major protection risks. Alongside immediate humanitarian assistance, transition and recovery efforts are needed for affected communities to be able to recover.

With large influx of refugees into Ethiopia from neighbouring countries, need for safe and secure transportation of refugees to designated sites will also remain high throughout 2023.

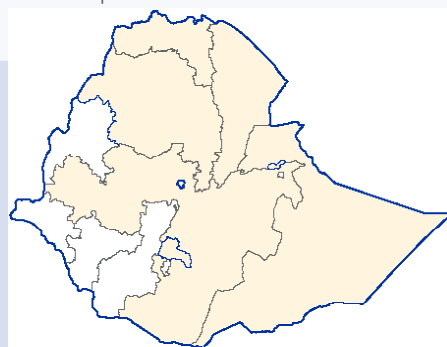
IOM is responding to the needs of crisis-affected communities across Ethiopia.

807,800

individuals supported



676,600

drought-affected
individuals supported


Drought-affected areas

INDIVIDUALS REACHED BY SECTOR

MARCH 2023



13,540

Individuals supported through
shelter, non-food items and
cash assistance



224,000

People indirectly
supported through
CCCM services

807,800
individuals
reached with
multi-sectoral
assistance



474,600

Individuals reached
through WASH



103,800

Individuals reached through
primary and mental health



228,000

Individuals reached
through RRF



130

Individuals reached through
transition and recovery

This map is for illustration purposes only. Names and boundaries on this map do not imply official endorsement or acceptance by IOM.

DROUGHT-AFFECTED INDIVIDUALS REACHED BY SECTOR MARCH 2023



21,500

Individuals assisted by
SNFIs Cluster partners



704,090

Individuals reached
indirectly through partners
with strengthened CCCM
capacity

664,100

drought-affected
individuals
reached with
multi-sectoral
assistance



420,760

Individuals reached
through WASH



15,300

Individuals reached through
primary and mental health



228,000

Individuals reached
through RRF

This map is for illustration purposes only. Names and boundaries on this map do not imply official endorsement or acceptance by IOM.



Shelter, Non-Food Items, and Cash Assistance

IOM is constructing, repairing, and maintaining household and communal shelters, and distributing essential non-food household items among crisis-affected populations. Cash assistance is also provided to support with shelter, NFIs, and multi-purpose needs of affected households in line with the Cash Working Group (CWG) recommendations.

Drought-affected individuals supported with shelter, non-food items and cash assistance

-

13,500

Individuals supported with shelter, non-food items and cash assistance

Drought-Affected

-

-



No. of people supported with shelter

NFI

No. of people supported with non-food items

Total

2,370

11,170

SNFI Cluster

21,500

Drought-affected individuals supported with shelter and non-food items Cluster



No. of SNFIs Cluster partners coordinated

25

NFI

No. of beneficiaries assisted by SNFIs Cluster partners

137,800



Camp Coordination and Camp Management (CCCM)

IOM is supporting camp management coordination fora, providing tools for data collection, service monitoring, referrals, and other support in camps for the displaced, establishing Community Representative structures for Internally Displaced Persons (IDPs), and building capacity of CCCM partners.

Individuals indirectly supported through CCCM partners

704,092

224,000

Individuals supported through CCCM services

704,092

Individuals indirectly reached through partners with strengthened CCCM capacity



224,000

Individuals supported through CCCM services



66

No. of IDP sites supported through CCCM services

CCCM Cluster

147,900

Drought-affected individuals assisted by CCCM Cluster partners



5

No. of CCCM Cluster partners coordinated

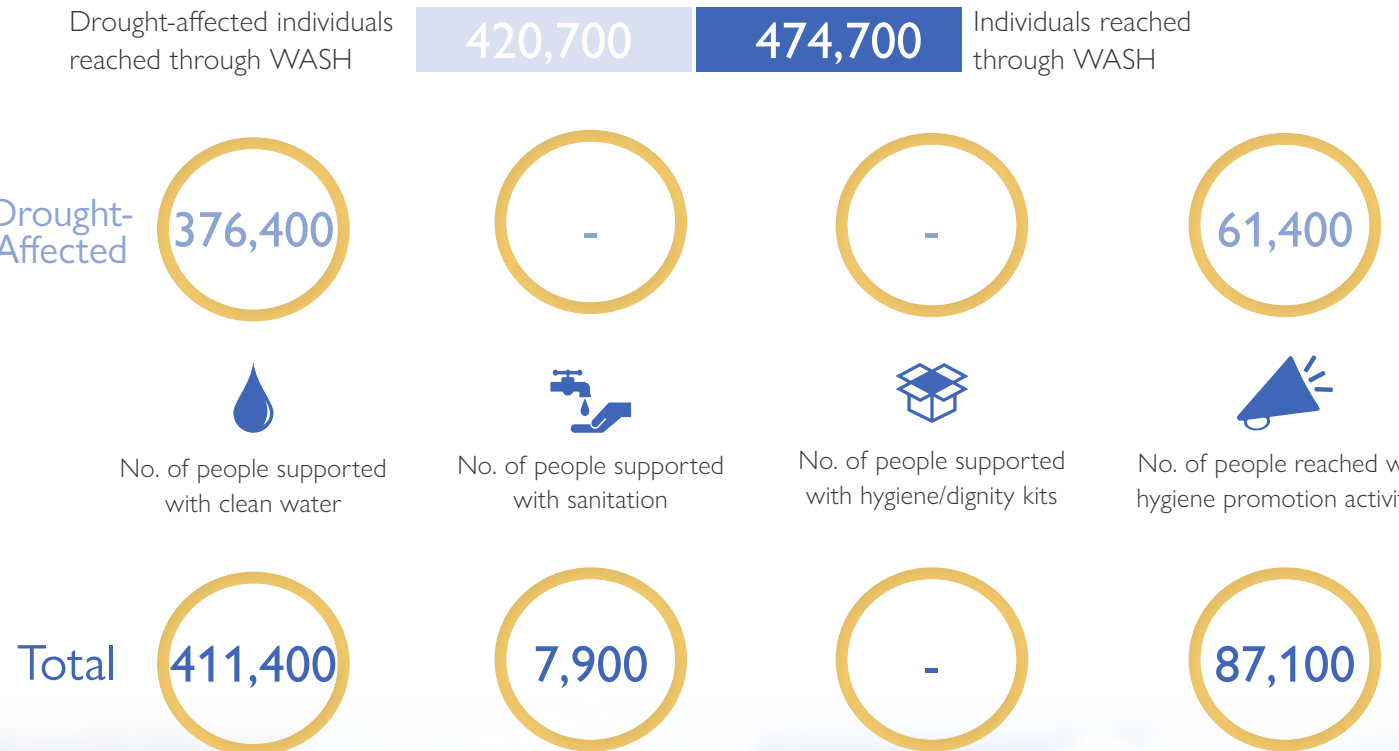


514,100

Individuals supported through CCCM Cluster partners

Water, Sanitation and Hygiene (WASH)

IOM is constructing new and rehabilitating existing water supply and sanitation facilities, trucking clean water to communities, distributing essential WASH related non-food items and water treatment chemicals, and promoting hygiene awareness to crisis-affected populations in Ethiopia.



PRIMARY HEALTH

IOM is delivering comprehensive lifesaving primary healthcare and nutrition services, integrating mental health and psychosocial support services, and mitigating GBV risks to vulnerable populations in priority areas. Health facilities are supported through deploying mobile health and nutrition teams.

Drought-affected individuals reached through primary and mental health

15,370

103,800

Individuals reached through primary and mental health

Drought-Affected

4,870

990

5,440

460

2,810



No. of people benefited from medical consultations



No. of women of reproductive age received reproductive health services



No. of people benefitted from health awareness activities



No. of children immunized



No. of U5 children and maternal nutritional status PLW screened for malnutrition

Total

28,300

5,220

45,800

3,990

12,300

MENTAL HEALTH

Drought-Affected

Total



No. of people received psychosocial support

1,740

21,400



No. of people benefitted from counselling services

210

5,410



No. of people benefitted from mental health awareness activities

4,580

12,500

RAPID RESPONSE FUND (RRF)

IOM's Rapid Response Fund (RRF) is supporting local and international non-governmental organizations' (NGOs) emergency response projects through small grants. Projects focus on shelter and settlements, essential non-food items (NFIs), cash-for-NFIs, water, sanitation, and hygiene (WASH), Camp Coordination and Camp Management (CCCM), and education. Through RRF, IOM has established an SNFIs pipeline to support SNFIs actors in their delivery of humanitarian assistance in affected areas.

Drought-affected individuals reached through RRF

228,000

228,000

Individuals reached through RRF

Drought-Affected

Total

No. of people supported with:

27,440

non-food items

27,440

70,890

CCCM service

70,890

40,400

hygiene promotion activities

40,400

TRANSITION & RECOVERY

IOM is supporting crisis-affected communities across Ethiopia to progressively resolve displacement situations and promote voluntary and informed decision-making via institutional capacity building and community empowerment. Social and economic structures are rebuilt by working with community networks and local governments to support and strengthen local governance and policy structures, to build stakeholders' capacity to respond to climate impacts, and to improve community self-reliance. IOM is focusing on supporting sustainable livelihoods and economic activities for distressed communities to improve their socioeconomic conditions and strengthen their local integration, with particular emphasis on socioeconomic empowerment of marginalized groups.

Individuals reached through transition and recovery

130



No. of people benefitting from TR related capacity building activities

130

