



IOM implements community-based livelihood projects across different intervention areas in Ethiopia in collaboration with Community Conversation groups - Photo: IOM 2023

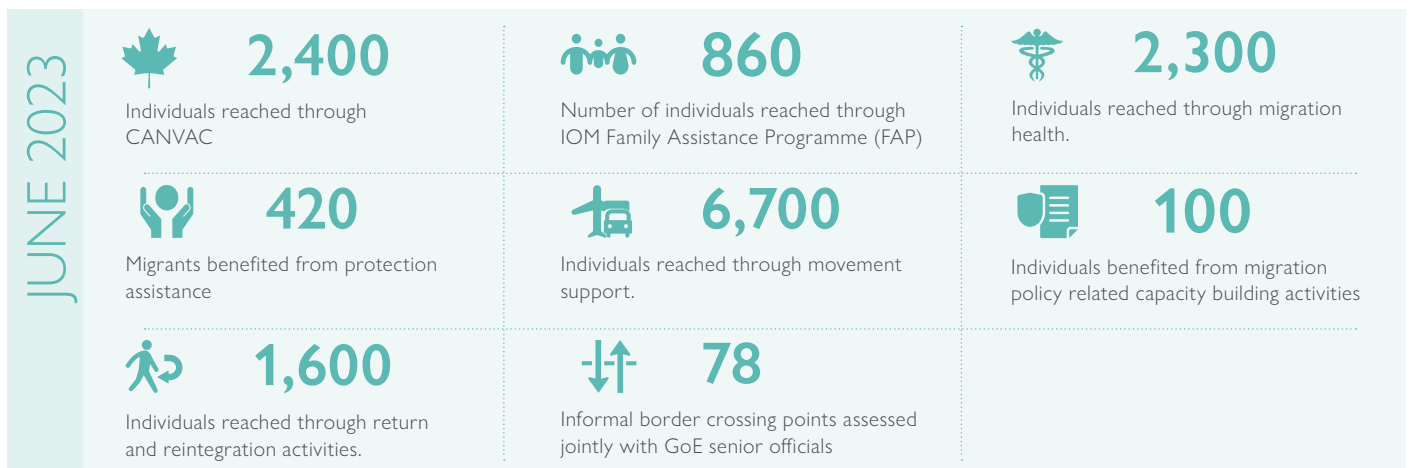
Ethiopia is a country of origin, transit, and destination for migrants, with approximately 250,000 Ethiopians migrating annually, driven by natural and man-made disasters and severe economic hardship. The number of migrants in need on the Eastern route is estimated to exceed 300,00 in the coming years. In 2022, almost 100,000 Ethiopians were forcibly returned from KSA, with one in six from Tigray regional state. Between January 2021 and December 2022, half of the returnees from KSA were reported to originate from drought-affected areas of Ethiopia. Both spontaneous and forced movements across Ethiopia's land borders occur, with thousands of movements each month.

Safe and dignified return and sustainable reintegration are essential parts of a comprehensive approach to migration management. IOM assists migrants in making informed decisions on their return and reintegration back into their communities. Migration Response Centres (MRCs) operate along key migration routes, providing direct assistance, including food and temporary shelter, information, and service referrals to people on the move. IOM supports Technical and Vocational Education

and Training (TVET) facilities to provide quality training to prospective migrant workers, supports GoE with evidence-informed migration management through the generation, analysis, and dissemination of migration data to respond more effectively to diverse migration and border governance issues.

IOM also works to enable migrants to benefit from an improved standard of physical, mental, and social well-being, so they can substantially contribute to social and economic development. IOM's health programming includes health assessments, vaccination activities, Tuberculosis diagnosis and treatment under Directly Observed Therapy (DOT), pre-departure medical services for resettlement purposes, and a variety of health promotion/assistance services.

In close coordination with key partners, IOM conducts resettlement, family reunification, humanitarian, and other admission initiatives, by facilitating movement and logistical assistance, handling the visa application process to Canada, and facilitating family reunification of vulnerable migrants with their families in Germany.



CANVAC

IOM operates a Canada Visa Application Centre (CANVAC) in Addis Ababa to handle the visa application process to Canada, ensuring that only properly completed visa applications are submitted.

 **1,700**

No. of visa applications and packages handled and transferred to Migration Office (MO)

 **1,800**


No. of Biometrics data collected and transmitted to immigration, Refugees and Citizenship Canada (IRCC)


 **2,400**


No. of walk-in and call centre enquiries handled


FAMILY ASSISTANCE PROGRAM (FAP)

The FAP centre in Addis Ababa is part of a global network of nine centres which are facilitating the family reunification of vulnerable migrants with their family members in Germany since 2016. The programme offers a wide range of support to Eritrean and Somali families residing in Ethiopia and who have a family member in Germany with recognized refugee or subsidiary protection status.

 **780**
No. of individual assisted by walk-in at office

 **400**
No. of applicants assisted during their family reunification visa application process via e-mails

 **150**
No. of family members contacted by phone to check their eligibility, and inform them about FAP services and required documents

 **90**
No. of complete applications collected and submitted to the German Visa Sections



IOM began operating the Family Assistance Programme (FAP) centre in Ethiopia in December 2018 - Photo: IOM 2023



IOM works to enable migrants and IDPs to benefit from an improved standard of physical, mental and social well-being - Photo: IOM 2022

MIGRATION HEALTH

IOM works to enable migrants and IDPs to benefit from an improved standard of physical, mental and social well-being, so they can substantially contribute to social and economic development. IOM's health programming includes health assessments, vaccination activities, Tuberculosis diagnosis and treatment under Directly Observed Therapy (DOT) and pre-departure medical services for resettlement purposes. IOM also provides a variety of health promotion/assistance services.



2,200

Health assessments conducted in Migration Health Assessment Centres (MHACs)



460

Pre-departure medical screenings (PDMS)/preembarkation checks (PEC) for migrants



3,500

Persons vaccinated as per resettlement country protocols



140

DNA sample collection and analysis for family reunification



3,500

Migrants received travel assistance with medical travel requirements

MIGRANT PROTECTION

Migration Response Centres (MRCs) operate along key migration routes, providing direct assistance, including food and temporary shelter, information, and service referrals to people on the move. Working collaboratively, MRCs bring together key partners to facilitate the identification of migrants in vulnerable situations and ensure that they receive appropriate, immediate and longer-term support.



420

Migrants benefited from protection assistance



420

Migrants received non-food items (NFIs), temporary accommodation, food, water, etc



420

Migrants received transportation assistance to return to their communities of origin



12

Individuals received medical support (Including screening)

RESETTLEMENT AND MOVEMENTS

Migration Movements includes directing, overseeing and coordination of IOM's resettlement, family reunification, humanitarian, and other admission initiatives, by facilitating movement and logistical assistance. Movements are conducted across Ethiopia in close coordination with key partners such as Refugees and Returnees Services (RRS), UNHCR, Immigration department, and Ethiopian Airlines with which an agreement was made globally.



530

Refugees departed from Ethiopia under IOM's resettlement programme



2,000

Refugees accommodated at Transit Centre



33

Refugees and migrants assisted under the IOM family reunification programme



100

Documents verified



80

People received arrival assistance at the Airport



2,900

Refugees assisted with emergency transport services



3,500

People benefited from Migration Movement related capacity building activities



4

People interviewed for resettlement purposes

MIGRATION POLICY AND DATA

IOM Ethiopia leads strategic coordination mechanisms that aim to foster whole-of-society approaches by providing technical inputs into developing policies that govern most counter-trafficking initiatives in the country. IOM supports the GoE formed Inter-Ministerial Working Group to facilitate evidence-informed migration management through the generation, analysis and dissemination of migration data.



5

No. of relevant workshops



63

People benefited from migration policy related capacity building activities



42

Key government stakeholders representatives attended on migration and data workshops

LABOUR MOBILITY AND SOCIAL INCLUSION

IOM's Labour Mobility and Social Inclusion programming provides policy and operational guidance in matters related to labour mobility, diaspora communities, and their links to development and migrant integration in Ethiopia.



1

No. of relevant workshops



2

No. of people benefited from LHD related capacity building activities

IMMIGRATION AND BORDER GOVERNANCE

IOM supports the Government of Ethiopia in improving the policy, legislation, operational systems, human resources and administrative structures required to respond more effectively to diverse migration and border management challenges.



78

Informal border crossing points assessed jointly with GoE senior officials



7

People benefited from Integrated Border Management related capacity building activities

RETURN AND REINTEGRATION

Safe and dignified return and sustainable reintegration are essential parts of a comprehensive approach to migration management. Together with a vast network of partners comprising governmental authorities and non-governmental partners both in the region and in the countries of origin, IOM Ethiopia assists migrants in making informed decisions on their return and reintegration back into their communities.



1,600

Returnee migrants registered, profiled and screened for vulnerabilities upon arrival



120

Returnee migrants assisted with Non-Food Items (NFIs)



39

Vulnerable returnees received tailor-made economic and social support packages



1,600

Returnee migrants assisted with onward transportation allowance (OTA) and NFIs



15

Persons reached through cash-based support



Working with its partners - IOM provides critical post-arrival assistance for returnees at different locations within Ethiopia - Photo: IOM 2023

